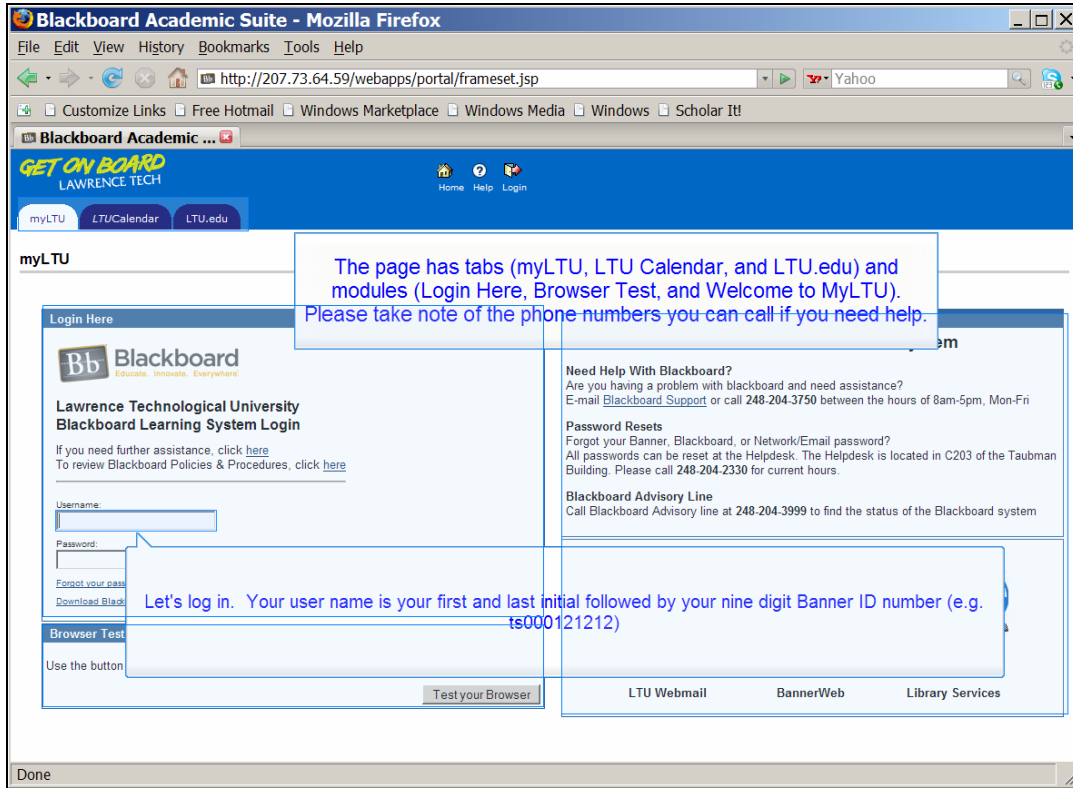


Slide 1  
Slide notes:  
Text Captions: Portal



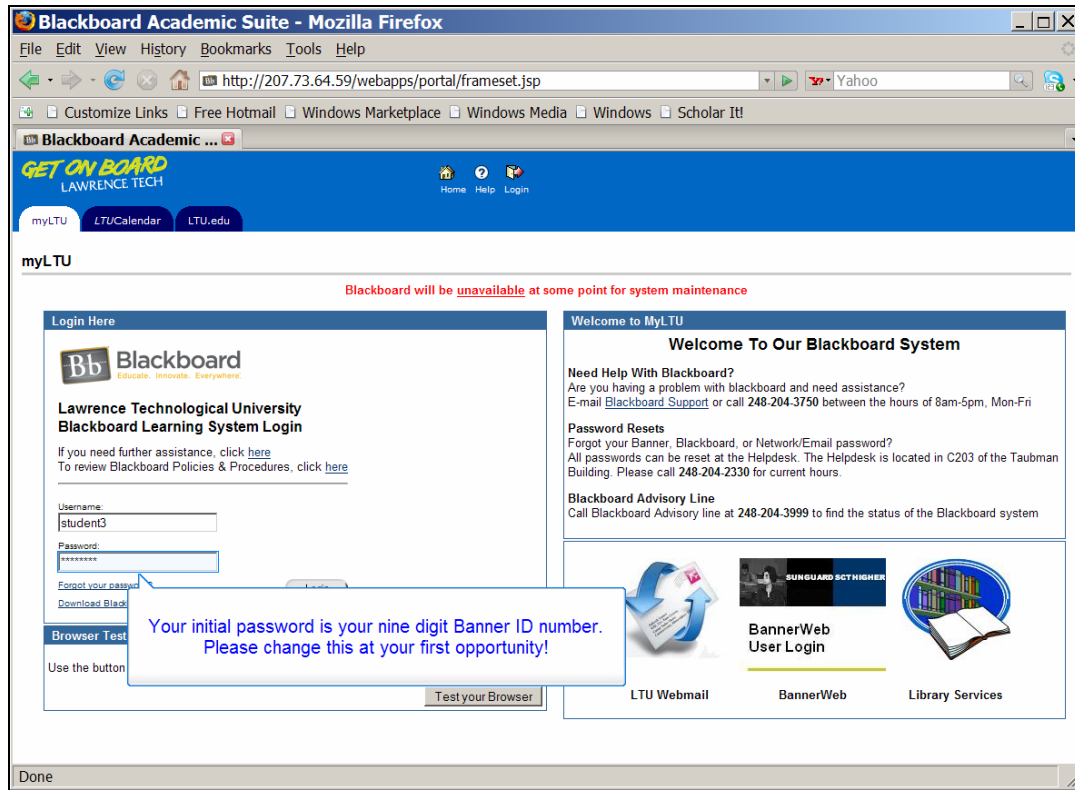
Slide 2

Slide notes:

Text Captions: Let's log in. Your user name is your first and last initial followed by your nine digit Banner ID number (e.g. ts000121212)

This is what the LTU Blackboard Portal looks like before you log in

The page has tabs (myLTU, LTU Calendar, and LTU.edu) and modules (Login Here, Browser Test, and Welcome to MyLTU). Please take note of the phone numbers you can call if you need help.



Slide 3

Slide notes:

Text Captions: Your initial password is your nine digit Banner ID number.

Please change this at your first opportunity!

Blackboard Academic Suite - Mozilla Firefox

File Edit View History Bookmarks Tools Help

http://207.73.64.59/webapps/portal/frameset.jsp

Blackboard Academic ...

GET ON BOARD  
LAWRENCE TECH

Home Help Login

myLTU LTU/Calendar LTU.edu

myLTU

Blackboard will be unavailable at some point for system maintenance

Login Here

**Bb Blackboard**  
Learn. Innovate. Everywhere.

**Lawrence Technological University  
Blackboard Learning System Login**

If you need further assistance, click [here](#)  
To review Blackboard Policies & Procedures, click [here](#)

Username:

Password:

[Forgot your password?](#)

[Download Blackboard Backup](#)

Login

Browser Test

Use the button below to check if your web browser is properly configured to use Blackboard

Test your Browser


Welcome to MyLTU


**Welcome To Our Blackboard System**


**Need Help With Blackboard?**  
Are you having a problem with blackboard and need assistance?  
E-mail [Blackboard Support](#) or call 248.204.3750 between the hours of 8am-5pm, Mon-Fri

**Password Resets**  
Forgot your Banner, Blackboard, or Network/Email password?  
All passwords can be reset at the Helpdesk. The Helpdesk is located in C203 of the Taubman Building. Please call 248.204.2330 for current hours.

**Blackboard Advisory Line**  
Call Blackboard Advisory line at 248.204.3999 to find the status of the Blackboard system

 **LTU Webmail**

 **BannerWeb  
User Login**

 **Library Services**

Done

Slide 4  
Slide notes:

**Blackboard Academic Suite - Mozilla Firefox**

File Edit View History Bookmarks Tools Help

http://207.73.64.59/webapps/portal/frameset.jsp

Blackboard Academic ...

GET ON BOARD  
LAWRENCE TECH

Home Help Logout

myLTU myExtras myCourses myOrgs eLearning Scholar

**Blackboard Tools**

- Announcements
- Calendar
- Tasks
- Address Book
- Personal Information
- View Bb Grades
- Send Email

**LTU Links**

- Helpdesk
- Office of Financial Aid
- Registrar's Office
- Student Affairs
- University Calendar
- University Contacts
- University Webpage

**What's New @LTU**

Click Here to Subscribe to LTU Alerts

Are you having a problem with blackboard and need assistance?  
E-mail [Blackboard Support](#) or call 248-204-3750 between the hours of 8am-5pm, Mon-Fri

**Need General IT Assistance**

Call the LTU University Status line at 248-204-2222 to find out about school closing, emergencies, Blackboard status, and Banner status

**BannerWeb User Login**

**Browser Test**

Use the button below to check if your web browser is properly configured to use Blackboard

Test your Browser

Done

**Callouts:**

- You have more tabs now. Please note the tabs and modules you see will differ depending on your role at the university.
- In this module you'll find a number of important Blackboard tools. Most important at this stage is Personal Information. Go here to change your password and update your e-mail address.
- This module contains important LTU links

Slide 5

Slide notes:

Text Captions: Let's take a look around

These three buttons, Home, Help, and Logout are always on top. It's important to log out of Blackboard before you close your browser.

You have more tabs now. Please note the tabs and modules you see will differ depending on your role at the university.

In this module you'll find a number of important Blackboard tools. Most important at this stage is Personal Information. Go here to change your password and update your e-mail address.

This module contains important LTU links

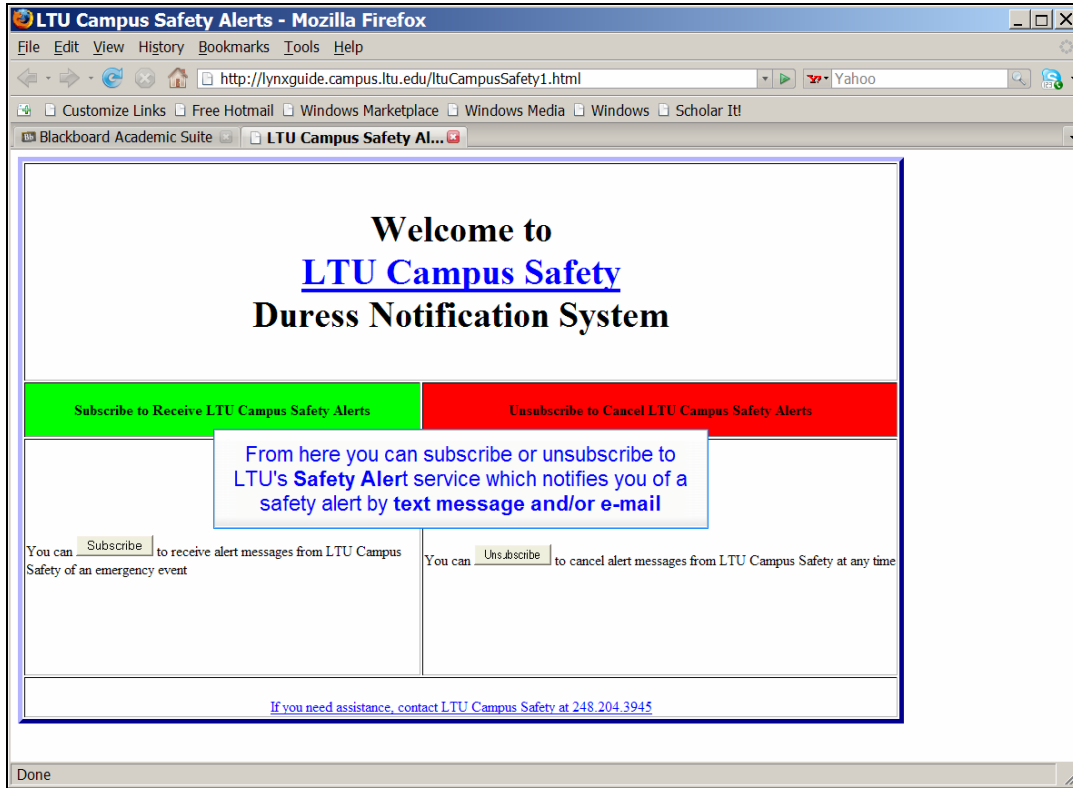
The screenshot shows the Blackboard Academic Suite interface in a Mozilla Firefox browser window. The browser's address bar displays the URL <http://207.73.64.59/webapps/portal/frameset.jsp>. The page header includes the Blackboard logo and navigation tabs for [myLTU](#), [myExtras](#), [myCourses](#), [myOrgs](#), [eLearning](#), and [Scholar](#). The main content area features a navigation sidebar on the left with links for [Tasks](#), [Address Book](#), [Personal Information](#), [View Bb Grades](#), and [Send Email](#). The central content area is titled "IT Services" and includes sections for "Need Help With Blackboard?" and "Need General IT Assistance". A callout box with a blue border and white background points to the "IT Services" section, containing the text "This is the IT Services module". Below the "Need General IT Assistance" section, there is a "Click Here to Subscribe to LTU Alerts" button with a yellow warning icon. A second callout box points to this button, containing the text "This module allows you to subscribe to LTU's Safety Alert notification service". At the bottom of the IT Services module, there are three icons: "LTU Webmail", "BannerWeb User Login", and "Library Services". On the right side of the page, there are sections for "Organizations in which you are participating:" (listing "Bill's Test Org") and a "Browser Test" section with a "Test your Browser" button.

Slide 6

Slide notes:

Text Captions: This is the IT Services module

This module allows you to subscribe to LTU's Safety Alert notification service



Slide 7  
Slide notes:  
Text Captions: From here you can subscribe or unsubscribe to LTU's Safety Alert service which notifies you of a safety alert by text message and/or e-mail

Blackboard Academic Suite - Mozilla Firefox

File Edit View History Bookmarks Tools Help

http://207.73.64.59/webapps/portal/frameset.jsp

Customize Links Free Hotmail Windows Marketplace Windows Media Windows Scholar It!

Blackboard Academic Suite  
GET ON BOARD  
LAWRENCE TECH

myLTU myExtras

**Blackboard Tools**

- Announcements
- Calendar
- Tasks
- Address Book
- Personal Information
- View Bb Grades
- Send Email

**LTU Links**

- Helpdesk
- Office of Financial Aid
- Registrar's Office
- Student Affairs
- University Calendar
- University Contacts
- University Webpage

**Whats New @LTU**

Click Here to Subscribe to LTU Alerts

**myAnnouncements**

No system announcements have been posted in the last 7 days.  
No course announcements have been posted in the last 7 days.  
No organization announcements have been posted in the last 7 days. [more...](#)

**IT Services**

**Need Help With Blackboard?** Animation  
Are you having a problem with blackboard and need assistance? (1483 x 863)  
E-mail [Blackboard Support](#) or call 248-204-3750 between the hours of 9am-5pm, Mon-Fri

**Need General IT Assistance**  
Are you having a problem with software, network connectivity issues, laptop issues or other IT related problems?? Stop by the LTU IT Helpdesk. The Helpdesk is located in C203 of the Taubman Building. Please call 248-204-2330 for current hours.

**University Status Line**  
Call the LTU University Status line at 248-204-2222 to find out about school closing, emergencies, Blackboard status, and Banner status

**myCourses**

Courses in which you are enrolled:  
[Bill's Test Course](#)

**myOrganizations**

Organizations in which you are participating:  
[Bill's Test Org](#)

**Browser Test**

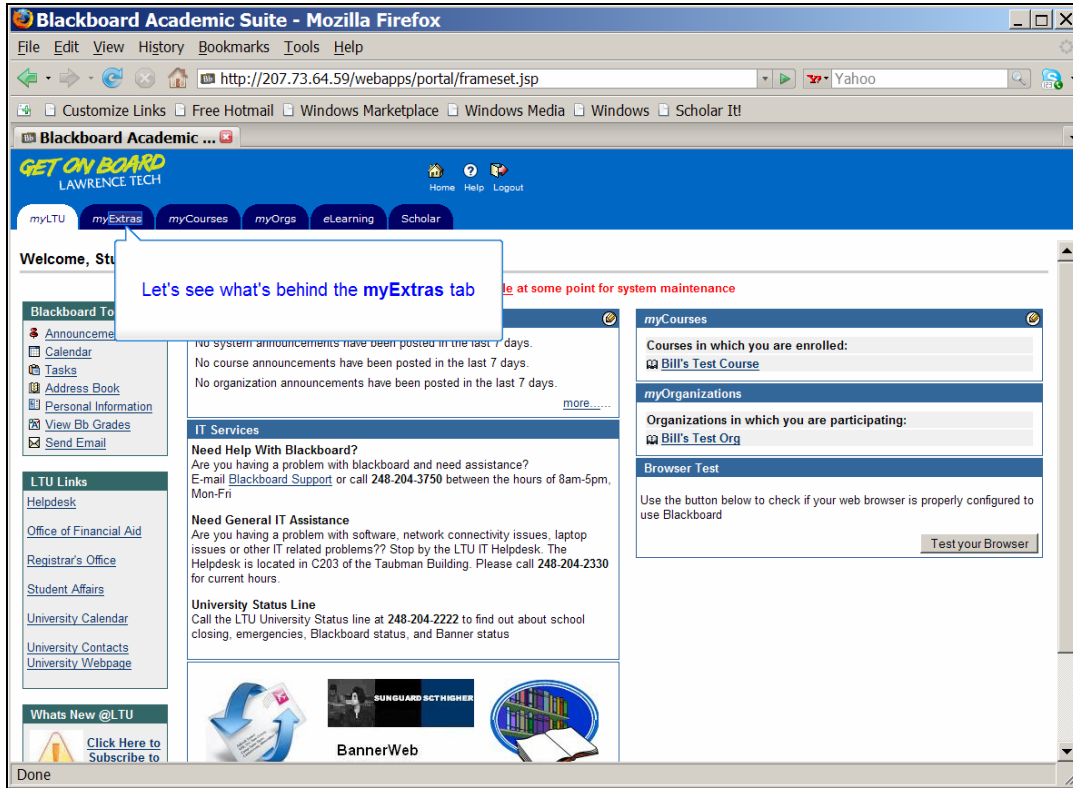
Use the button below to check if your web browser is properly configured to use Blackboard

[Test your Browser](#)

**LTU Webmail** **BannerWeb User Login** **Library Services**

Done

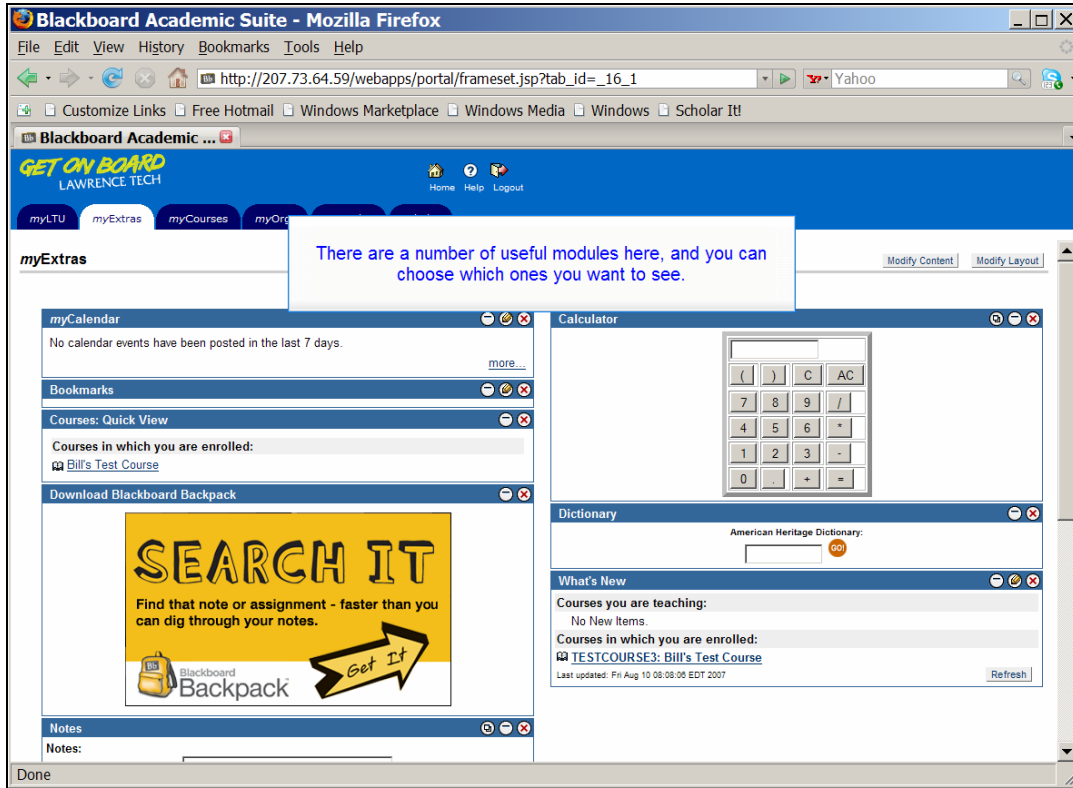
Slide 8  
Slide notes:  
Text Captions: These modules hold your courses and your organizations. The third module allows you to test your browser's settings to make sure they are compatible with Blackboard.



Slide 9

Slide notes:

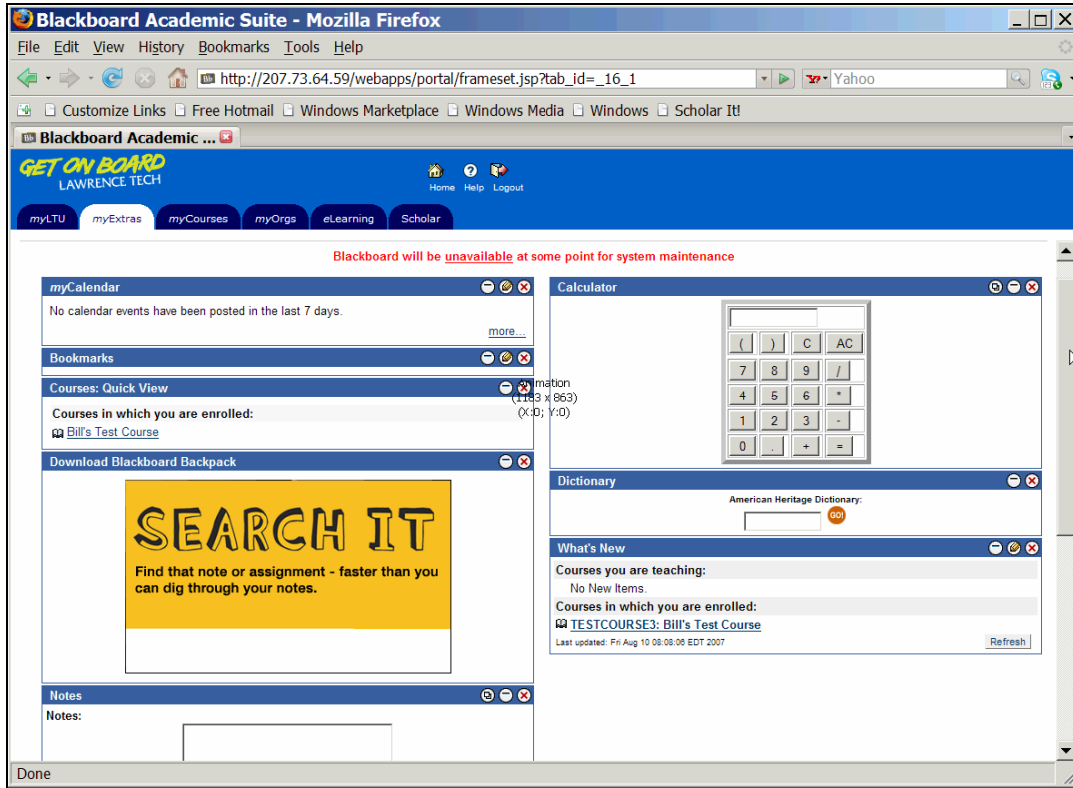
Text Captions: Let's see what's behind the myExtras tab



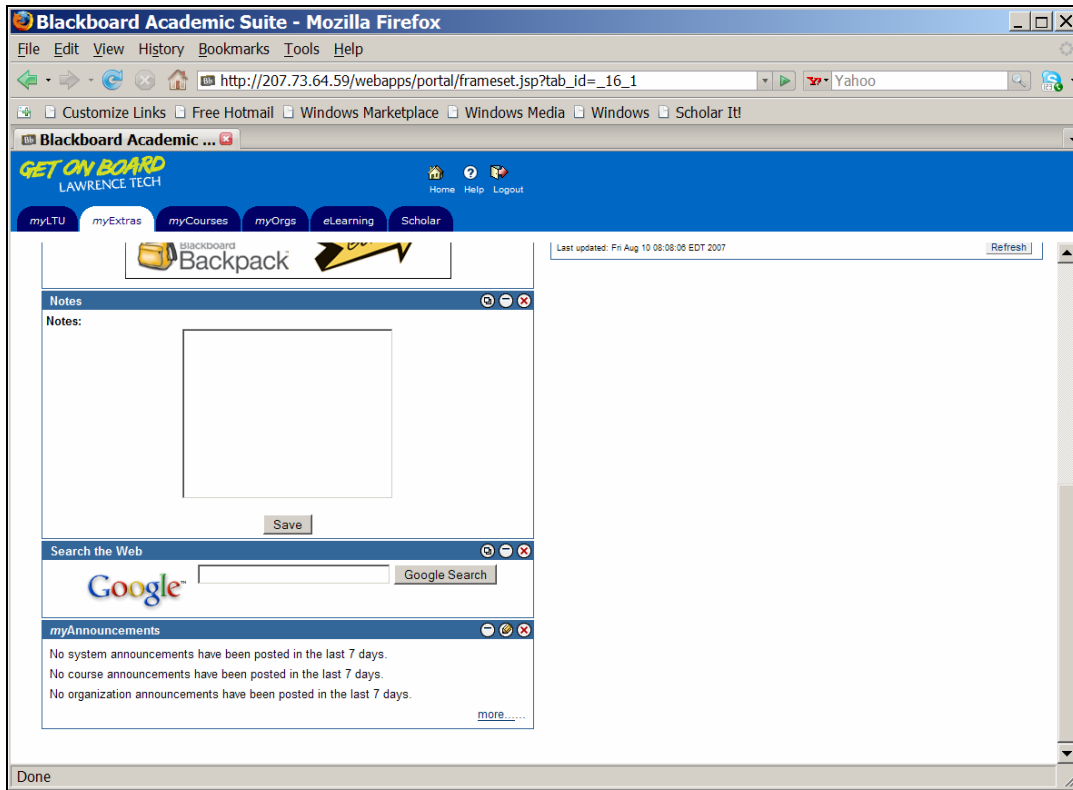
Slide 10

Slide notes:

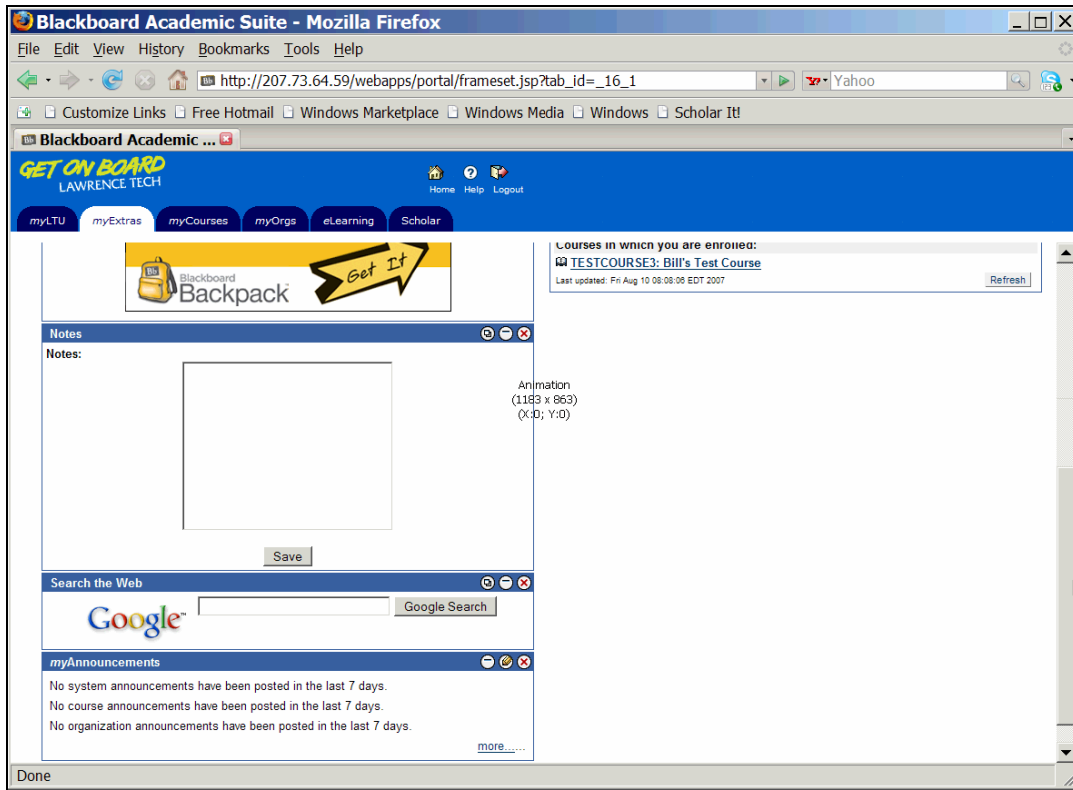
Text Captions: There are a number of useful modules here, and you can choose which ones you want to see.



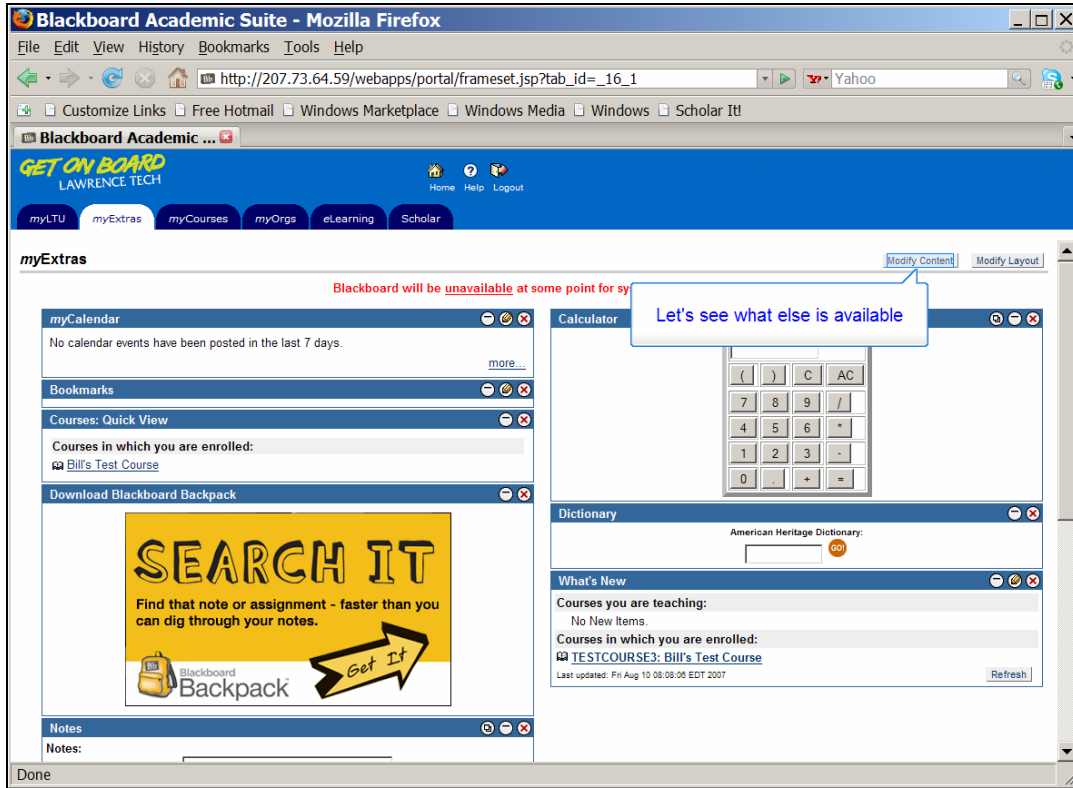
Slide 11  
Slide notes:



Slide 12  
Slide notes:



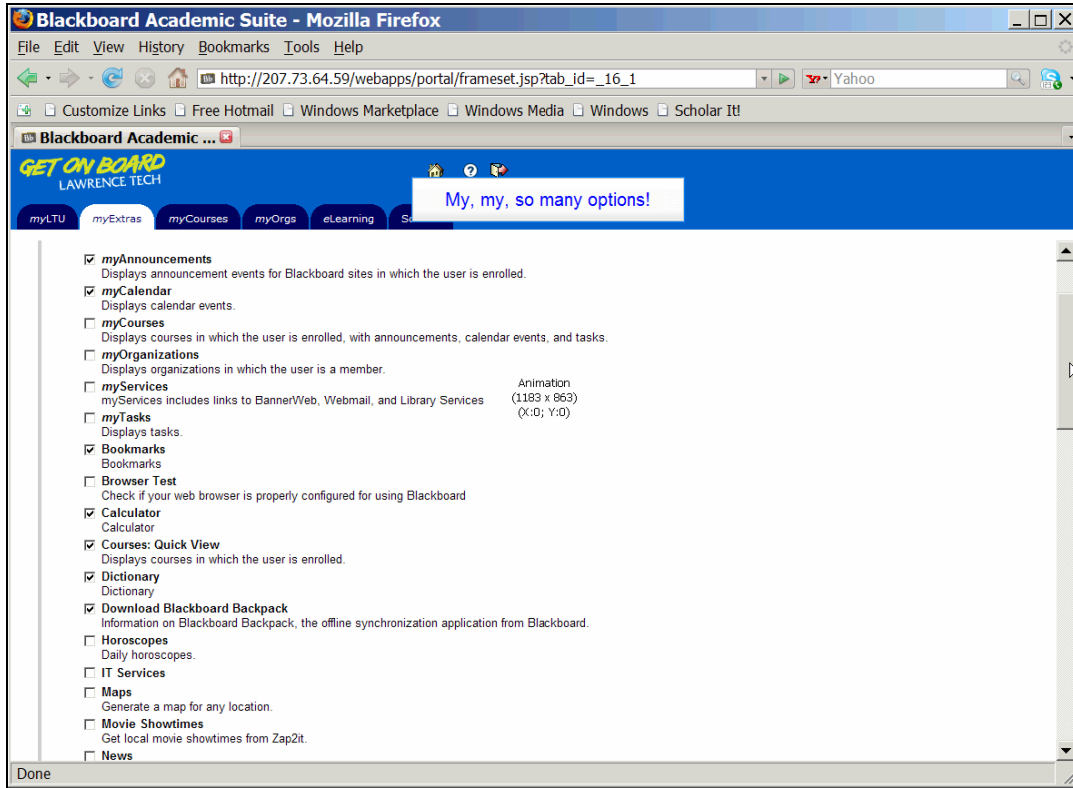
Slide 13  
Slide notes:



Slide 14

Slide notes:

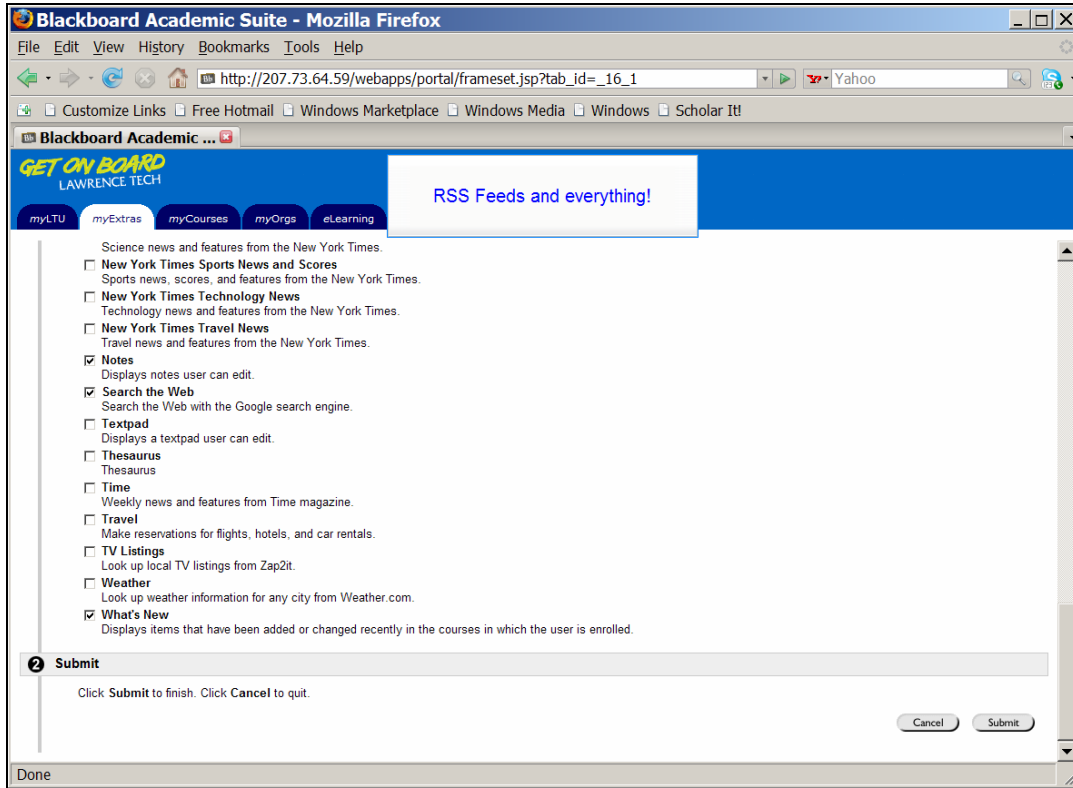
Text Captions: Let's see what else is available



Slide 15

Slide notes:

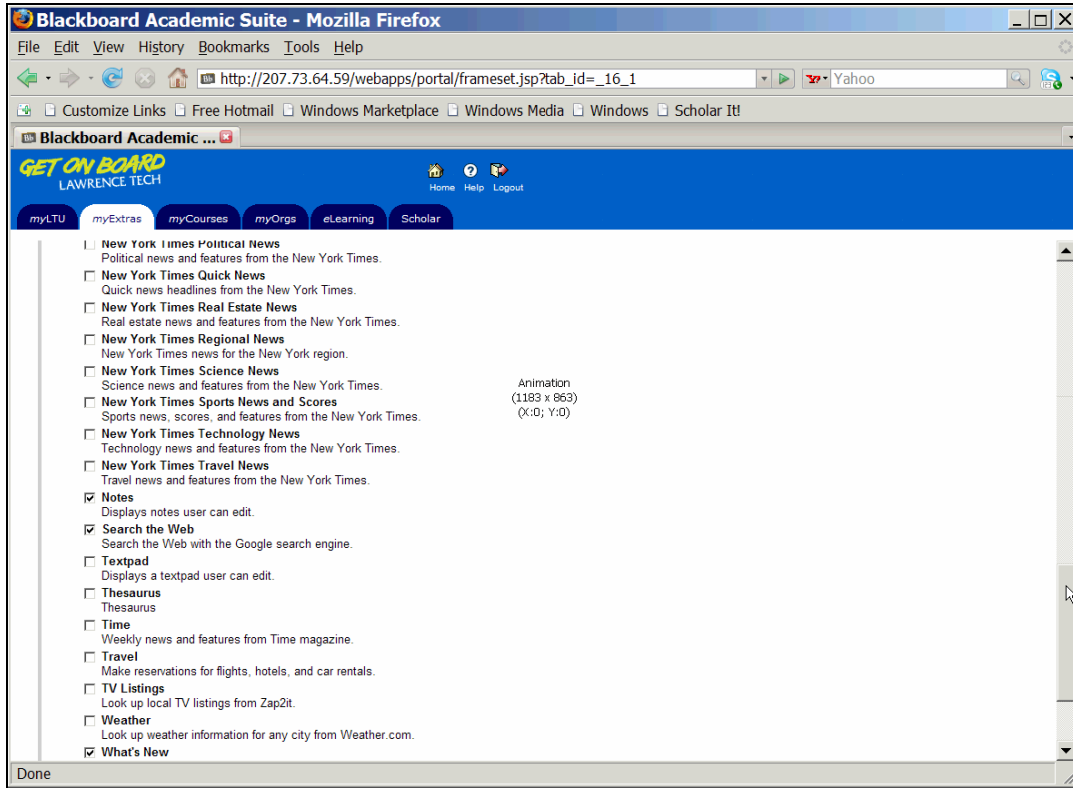
Text Captions: My, my, so many options!



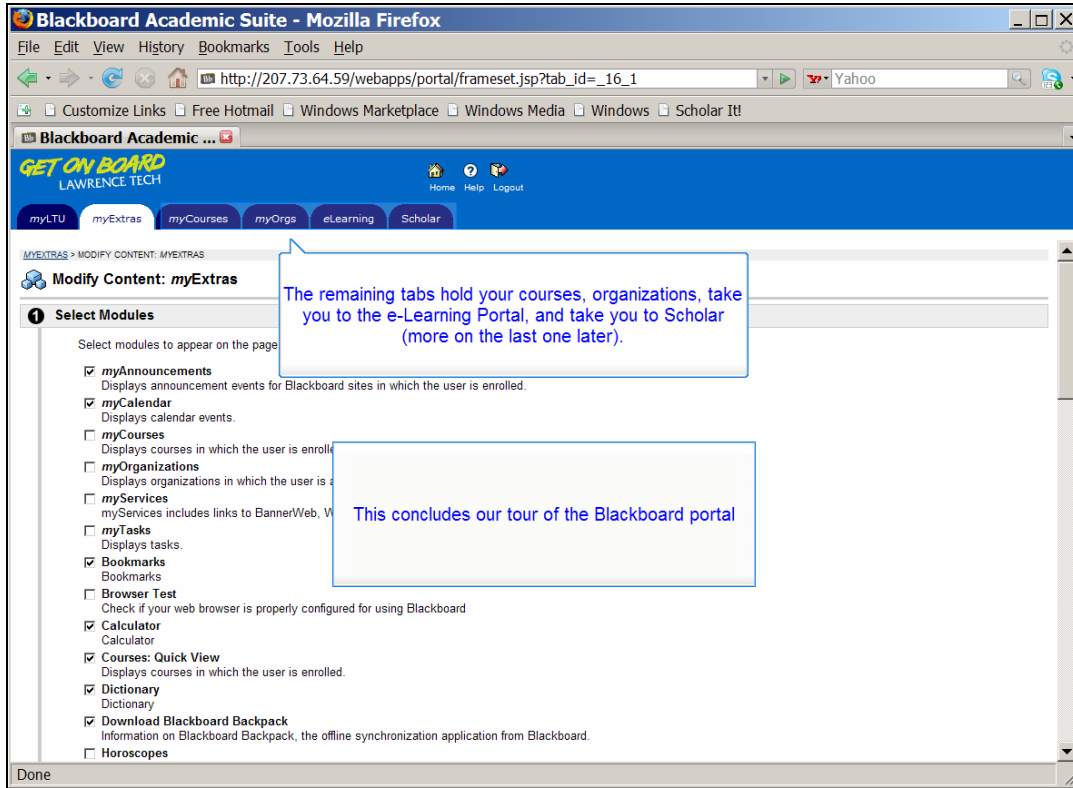
Slide 16

Slide notes:

Text Captions: RSS Feeds and everything!



Slide 17  
Slide notes:



Slide 18

Slide notes:

Text Captions: This concludes our tour of the Blackboard portal

The remaining tabs hold your courses, organizations, take you to the e-Learning Portal, and take you to Scholar (more on the last one later).