



Instructional Technology Support - VITRC 248.204.3750 vitrc@ltu.edu

Tablet PC FAQs

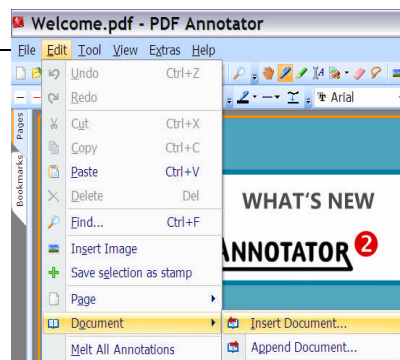
Topic: PDF Annotator

Question: How do I merge multiple PDF documents?

Answer: Use **Document**, **Document Insert** feature to merge one PDF document into an existing PDF document at a specific location.

Insert Document:

1. Start **PDF Annotator**; open the main PDF document.
2. Position the cursor on the page following the insertion location desired
3. Select **Document > Insert Document**.
4. Locate and select the file; click **Open**.
5. When the merge is complete; select **File, Save**.
6. Rename the newly merged document.



Question: How do I append multiple PDF documents?

Answer: Use **Document Append** feature add a PDF document to the end of an existing PDF document

To append a document to the end of the current document:

1. Select **Document > Append Document**
2. When the merge is complete; select **File, Save**.
3. Rename the newly merged document

Use this function to merge several PDF documents into a new document.

For Further Support Please Contact

Veraldi Instructional Technology and Resource Center
248.204.3750
vitrc@ltu.edu