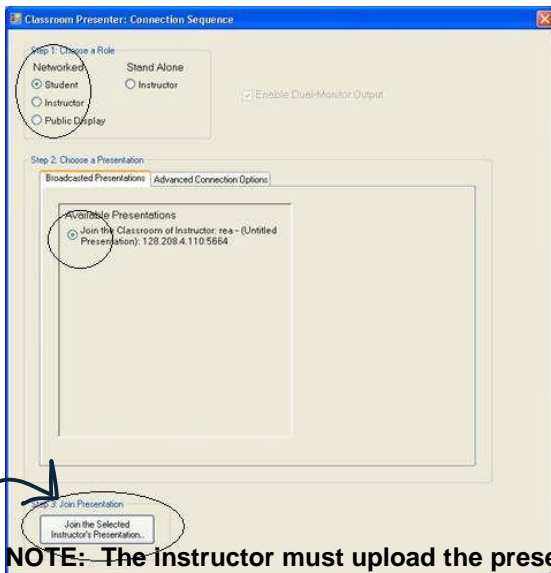


Starting Classroom Presenter for the Student

1. **Open Classroom Presenter (Start, All Programs, UW CSE, Presenter 3.0, Presenter 3.0).** The **Connection Sequence dialog box** will appear.
2. Select **Student** role under **Networked**. If student machines are on the same subnet as the instructor, then the instructor's presentation should show up under the **Broadcasted Presentations** tab.
3. Select the instructor's presentation from **Available Presentations** after it appears.
4. Click **Join the Selected Instructor's Presentation** button at the bottom of the page.




Make sure your wireless connection is "ON" and your signal strength is at least "Good."

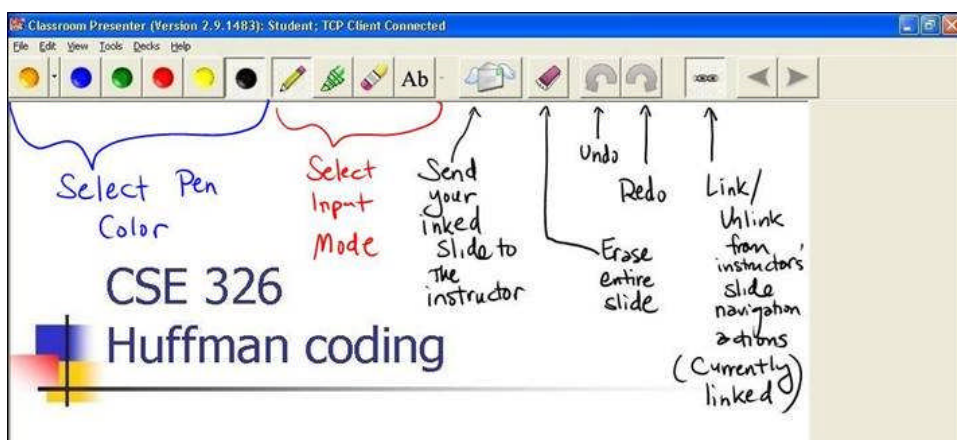
NOTE: The instructor must upload the presentation prior to student access for this button to appear.


Student Controls

With the Presenter control buttons, instructors can choose pen colors and styles and erasing features.

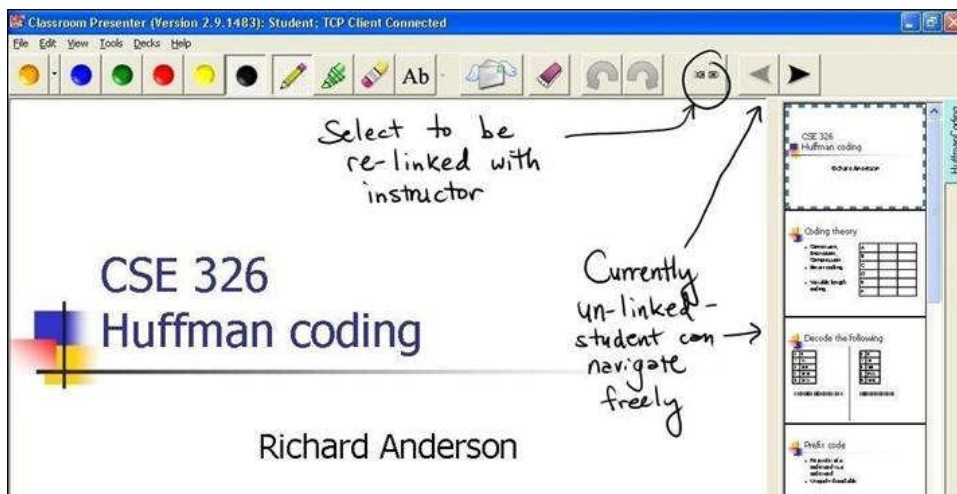
In addition,

- Submit the contents of the current slide (ink and text notes) to the instructor as a student submission 
- Erase all (clear the slide of all your ink and inserted text notes)
- Undo and Redo ink strokes or erasing



- (If enabled by the instructor) **Link or Unlink** from the instructor's slide navigation actions,  (See illustration below)
- (If enabled by the instructor, and unlinked by the student) Navigate the presentation via the arrow buttons (or by selecting a slide in the filmstrip)

Student view with free navigation enabled:



Saving Presentations (as a Classroom Presenter file .cp)

Instructors can save:

- Annotated or inked presentations decks
- student submission decks
- and inked whiteboard decks

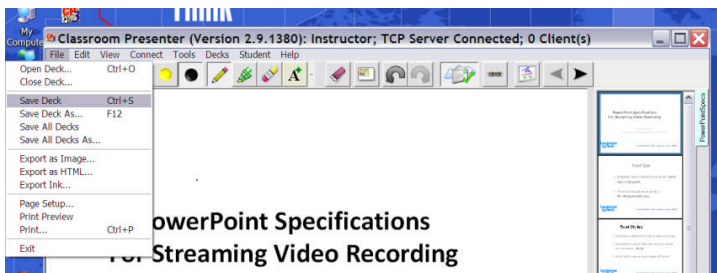
Students can save:

- Presentation decks including instructor ink and student ink
- All slide decks are saved as Classroom Presenter 3 slide decks (cp3 file extension)

To ensure you are saving the correct file (deck) click on one of the slides so that it appears in the main window (do not click the tabs alongside the filmstrip).

Select **File->Save Deck**.

Select **File->Save All Decks** to save all decks at once. This feature will prompt you to save each deck.



In addition, when you exit Classroom Presenter , you will be prompted to save each deck.

