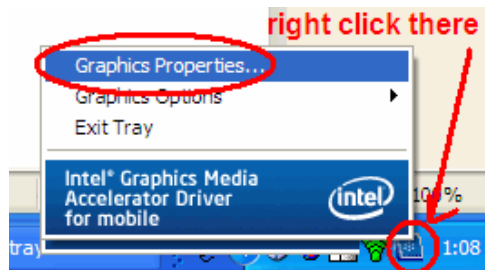
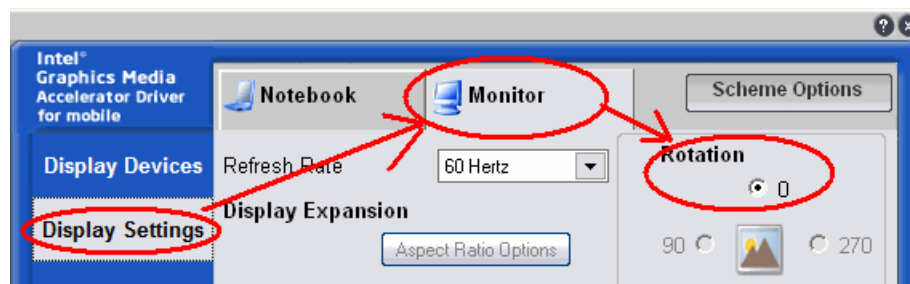
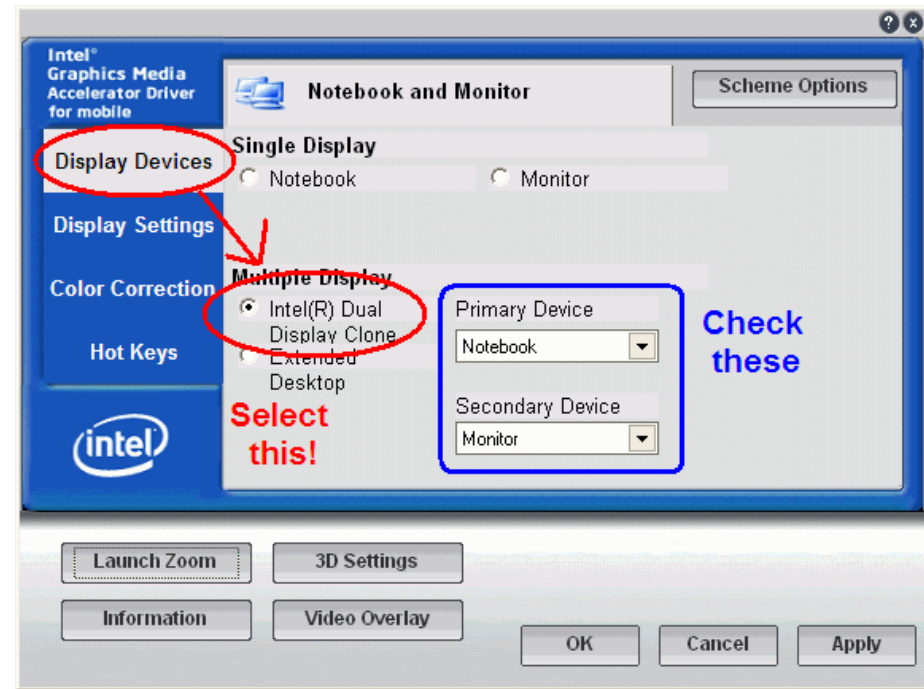


Setting projector to “dual clone” (this is a link!)

Easy method: Start with tablet closed – projector -> connected/on – open tablet
If that doesn't work automatically ... follow steps here:



You must be connected to an overhead or a monitor, or you won't see the “dual display clone” choice!



To make sure the image doesn't “flip over” on the overhead if you are in Tablet mode